

# Sorbothane® X-Tra Flex Sheet Stock



X-Tra Flex Sheet is molded with hemispherical bumps. The hemispheres permit the material to flex more easily and allow for soft deformation under load.

## SHEET STOCK

*X-Tra Flex*  
12" x 14"



| PART NUMBER   | THICKNESS | THICKNESS TOLERANCE | DURO | NOTES |
|---------------|-----------|---------------------|------|-------|
| 0225532-40-10 | 0.19      | ±0.025              | 40   |       |
| 0225532-50-10 | 0.19      | ±0.025              | 50   |       |
| 0225532-60-10 | 0.19      | ±0.025              | 60   |       |
| 0225532-70-10 | 0.19      | ±0.025              | 70   |       |

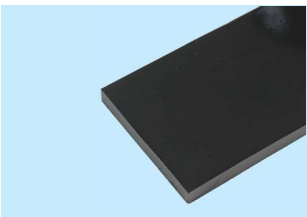
# Sorbothane® Strips

Sorbothane® Strips offer a quick and effective method for isolating a wide variety of equipment. Choose the correct thickness, durometer and number of Strips required for the load. Sorbothane® Strips can easily be cut to size and are ideal for medium to heavy loads.



## STRIPS

2" x 36"



| PART NUMBER   | THICKNESS | THICKNESS TOLERANCE | DURO | NOTES |
|---------------|-----------|---------------------|------|-------|
| 0236212-50-10 | 0.125     | ±0.015              | 50   |       |
| 0236212-70-10 | 0.125     | ±0.015              | 70   |       |
| 0236225-50-10 | 0.25      | ±0.020              | 50   |       |
| 0236225-70-10 | 0.25      | ±0.020              | 70   |       |
| 0236237-30-10 | 0.375     | ±0.025              | 30   |       |
| 0236237-50-10 | 0.375     | ±0.025              | 50   |       |
| 0236237-70-10 | 0.375     | ±0.025              | 70   |       |
| 0236250-30-10 | 0.50      | ±0.030              | 30   |       |
| 0236250-50-10 | 0.50      | ±0.030              | 50   |       |
| 0236250-70-10 | 0.50      | ±0.030              | 70   |       |