



PCB MOUNTING ELEMENTS

Corner Element With Stick Peg

Material:

TPE
(Thermoplastic Elastomer)
RoHS Compliant

Colour:

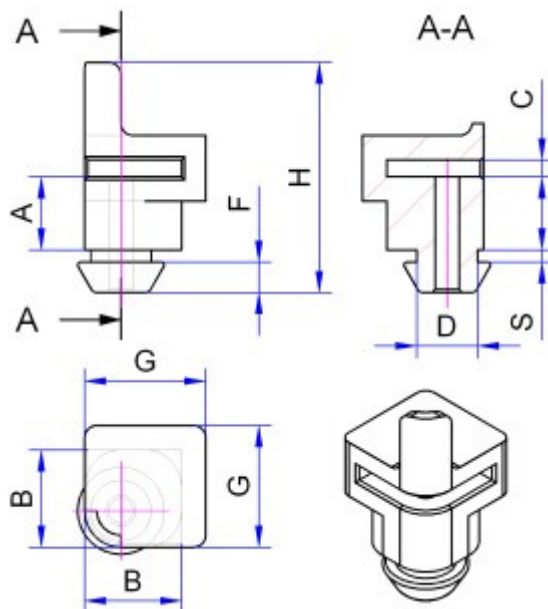
Black

Hardness:

ca. 70 Shore A

Fire Resistance:

UL94-V-0



Ordering Information	EES	16	60	10 or 20
	Part		Printed Circuit Board Thickness In 1/10mm	Distance Size A in 1/10mm

Part No.	A	B	C	D	E	F	G	H	S	Plate Thickness
EES-16-60-10	6.0	8.0	1.4	5.0	-	2.5	10.0	18.9	1.0	0.75 ~ 1.25
ESS-16-60-20	6.0	8.0	1.4	5.0	-	2.5	10.0	19.9	2.0	1.5 ~ 2.5

Gelmecc UK

Marcom House, 1-2 Steam Mill Lane, Great Yarmouth, Norfolk, NR31 0HP

Telephone: +44(0) 1493 668622 Fax: +44(0) 1493 668623

Email: sales@gelmecc.co.uk Website: www.gelmecc.co.uk



PCB MOUNTING ELEMENTS

Corner Element With Hole

Material:

TPE
(Thermoplastic Elastomer)
RoHS Compliant

Colour:

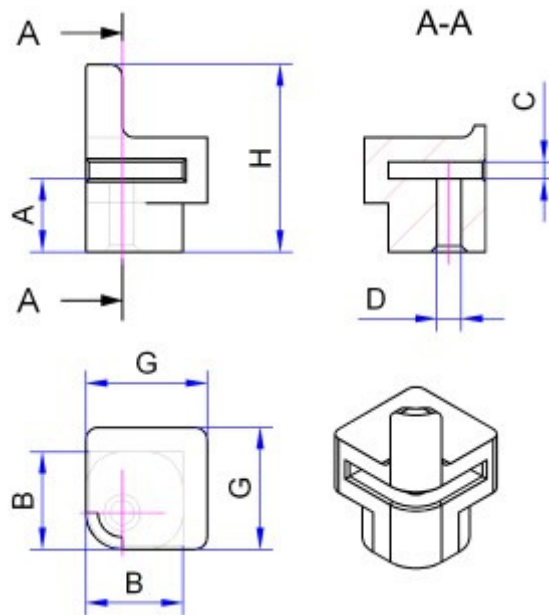
Black

Hardness:

ca. 70 Shore A

Fire Resistance:

UL94-V-0



Ordering Information	EEB	16	60
	Part	Printed Circuit Board Thickness In 1/10mm	Distance Size A in 1/10mm

Part No.	A	B	C	D	E	F	G	H	S	Plate Thickness
EEB-16-60	6.0	8.0	1.4	2.0	-	-	10.0	15.4	-	-

Gelmecc UK

Marcom House, 1-2 Steam Mill Lane, Great Yarmouth, Norfolk, NR31 0HP

Telephone: +44(0) 1493 668622 Fax: +44(0) 1493 668623

Email: sales@gelmecc.co.uk Website: www.gelmecc.co.uk



PCB MOUNTING ELEMENTS

Corner Element With Stick Peg

Material:

TPE
(Thermoplastic Elastomer)
RoHS Compliant

Colour:

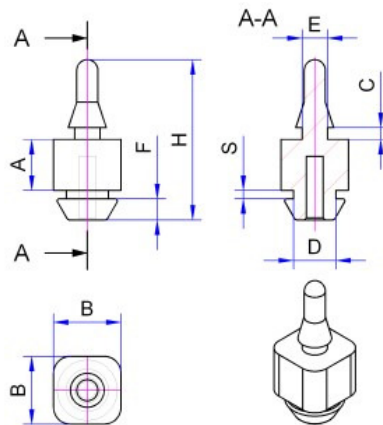
Black

Hardness:

ca. 70 Shore A

Fire Resistance:

UL94-V-0



Ordering Information	SES	16	60	30 or 40	10 or 20
	Part	Printed Circuit Board Thickness In 1/10mm	Distance Size A in 1/10mm	Distance Size E in 1/10mm 30 = for 3.0 – 3.5 mm holes. 40 = for 4.0 – 4.5 mm holes in printed circuit board.	10 = for plate thickness from 0.75 – 1.25 mm. 20 = for plate thickness from 1.50 – 2.50 mm.

Part No.	A	B	C	D	E	F	G	H	S	Plate Thickness
SES-16-60-30-10	6.0	8.0	1.4	5.0	3.0	2.5	-	18.9	1.0	0.75 ~ 1.25
SES-16-60-30-20	6.0	8.0	1.4	5.0	3.0	2.5	-	19.9	2.0	1.5 ~ 2.5
SES-16-60-40-10	6.0	8.0	1.4	5.0	4.0	2.5	-	19.9	1.0	0.75 ~ 1.25
SES-16-60-40-20	6.0	8.0	1.4	5.0	4.0	2.5	-	20.9	2.0	1.5 ~ 2.5

Gelmecc UK

Marcom House, 1-2 Steam Mill Lane, Great Yarmouth, Norfolk, NR31 0HP

Telephone: +44(0) 1493 668622 Fax: +44(0) 1493 668623

Email: sales@gelmecc.co.uk Website: www.gelmecc.co.uk



PCB MOUNTING ELEMENTS

Stick Element With Hole

Material:

TPE
(Thermoplastic Elastomer)
RoHS Compliant

Colour:

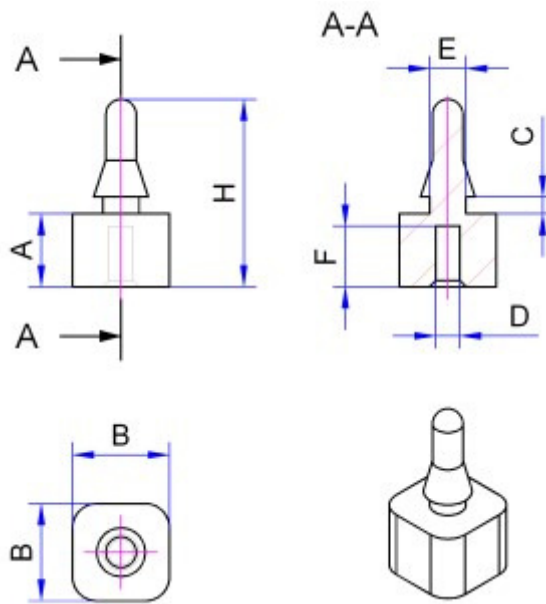
Black

Hardness:

ca. 70 Shore A

Fire Resistance:

UL94-V-0



Ordering Information	SEB Part	16 Printed Circuit Board Thickness In 1/10mm	60 Distance Size A in 1/10mm	30 or 40 Distance Size E in 1/10mm 30 = for 3.0 – 3.5 mm holes. 40 = for 4.0 – 4.5 mm holes in printed circuit board.
----------------------	----------	--	------------------------------------	--

Part No.	A	B	C	D	E	F	G	H	S	Plate Thickness
SEB-16-60-30	6.0	8.0	1.4	2.0	3.0	5.0	-	15.4	-	-
SEB-16-60-40	6.0	8.0	1.4	2.0	4.0	5.0	-	16.4	-	-

Gelmecc UK

Marcom House, 1-2 Steam Mill Lane, Great Yarmouth, Norfolk, NR31 0HP

Telephone: +44(0) 1493 668622 Fax: +44(0) 1493 668623

Email: sales@gelmecc.co.uk Website: www.gelmecc.co.uk



PCB MOUNTING ELEMENTS

Material Properties:

Item	Value	Remark
Specific Gravity	1.26 g/cm ³	ASTM D792
Tensile Stress (300% Strain)	4.00 MPa	ASTM D412A
Tensile Strength (Break)	6.21 MPa	ASTM D412A
Elongation	600 %	ASTM D412A
Tear Strength	26.3 kN/m	ASTM D624
Compression Set	19 %	ASTM D395B
Hardness	58 Shore A	ASTM D2240
Temperature	-40 to 100	-

Gelmecc UK

Marcom House, 1-2 Steam Mill Lane, Great Yarmouth, Norfolk, NR31 0HP

Telephone: +44(0) 1493 668622 Fax: +44(0) 1493 668623

Email: sales@gelmecc.co.uk Website: www.gelmecc.co.uk