



ELASTOMER STUD MOUNTS

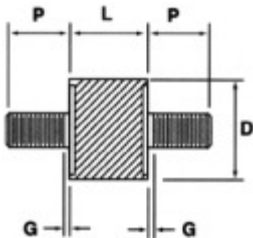


- Small Mounts From 8mm to 12mm.
- Very Soft High Damping Viscoelastic.
- High Damping Elastomer Just Shore A 24 Durometer.
- Soft, Pliable, Physically Strong.
- Metric Thread.

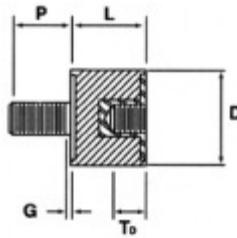
Larger PCBs, disk drives, optical drives, small motors, small pumps and lightweight electronic 'boxes' often need small compact mounting solutions in traditional stud or sandwich mount configuration. Small compact mounting solutions in traditional stud or sandwich mount configuration. Male/ Male, male/blank, female/blank configurations also available. Made of very high damping urethanes which can outperform traditional rubber mounts and are compact enough for narrow space enclosures.

V material range is much softer than traditional rubber sandwich mounts at Shore A 24. Able to vibration damp very light loads. Low durometer also provides a low natural frequency down to 17Hz. Can effectively isolate lower frequency vibration - 25 hz + whilst still providing good damping at resonance to control large deflections under shock loads. Our H material stud mount range is made of tough highly damped polyurethane thermoset.

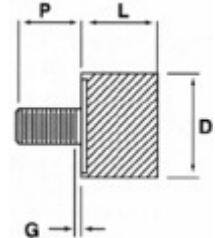
These provide high performance damping, isolation and shock and motion control in more demanding electronic environments. This material achieves loss factors in excess of 2.0 ensuring high performance in critical applications.



Male ~ Male Configuration (MM Series)



Male ~ Female Configuration (MF Series)



Male ~ Blank Configuration (MB Series)

Gelmecc UK

1-2 Steam Mill Lane, Great Yarmouth, Norfolk, NR31 0HP
Telephone: +44(0) 1493 668622 **Fax:** +44(0) 1493 668623
Email: sales@gelmecc.co.uk **Website:** www.gelmecc.co.uk



ELASTOMER STUD MOUNTS

Male - Male Parts:

Part Number	Load (kg's)	Dimensions		Metal Insert				
	Maximum Compressive	D Diam.(mm)	L Length (mm)	Type	P Overall Height	G Grip (mm)	TD Depth (mm)	Hardness ASTM D2240 (Shore A Durometer)
MM - 100 - C04 - H	1.81	6.985	8.128	#4 - 40	5.08	1.52	n/a	58
MM - 100 - C04 - SL20100	0.22	7.112	8.128	#4 - 40	5.08	1.52	n/a	21
MM - 100 - C04 - SL25200	0.22	7.112	8.128	#4 - 40	5.08	1.52	n/a	27
MM - 200 - C06 - H	3.63	10.16	12.70	#6 - 32	9.52	1.52	n/a	58
MM - 200 - C06 - SL20100	0.45	10.28	12.70	#6 - 32	9.52	1.52	n/a	21
MM - 200 - C06 - SL25200	0.45	10.28	12.70	#6 - 32	9.52	1.52	n/a	27
MM - 200 - C08 - H	3.63	10.16	12.70	#8 - 32	9.52	1.52	n/a	58
MM - 200 - C08 - SL20100	0.45	10.16	12.70	#8 - 32	9.52	1.52	n/a	21
MM - 200 - C08 - SL25200	0.45	10.16	12.70	#8 - 32	9.52	1.52	n/a	27
MM - 300 - C25 - H	9.09	15.62	15.87	1/4 - 20	12.70	2.54	n/a	58
MM - 400 - C31 - H	22.7	25.40	19.05	5/16 - 18	15.87	2.54	n/a	58

Male - Female Parts:

Part Number	Load (kg's)	Dimensions		Metal Insert				
	Maximum Compressive	D Diam.(mm)	L Length (mm)	Type	P Overall Height	G Grip (mm)	TD Depth (mm)	Hardness ASTM D2240 (Shore A Durometer)
MF - 100 - C04 - H	0.90	6.985	8.128	#4 - 40	5.08	1.52	2.794	58
MF - 100 - C04 - SL20100	0.13	7.112	8.128	#4 - 40	5.08	1.52	2.794	21
MF - 100 - C04 - SL25200	0.13	7.112	8.128	#4 - 40	5.08	1.52	2.794	27
MF - 200 - C06 - H	1.81	10.16	12.70	#6 - 32	9.52	1.52	4.064	58
MF - 200 - C06 - SL20100	0.27	10.28	12.70	#6 - 32	9.52	1.52	4.064	21
MF - 200 - C06 - SL25200	0.27	10.28	12.70	#6 - 32	9.52	1.52	4.064	27
MF - 200 - C08 - H	1.81	10.16	12.70	#8 - 32	9.52	1.52	4.064	58
MF - 200 - C08 - SL20100	0.27	10.16	12.70	#8 - 32	9.52	1.52	4.064	21
MF - 200 - C08 - SL25200	0.27	10.16	12.70	#8 - 32	9.52	1.52	4.064	27
MF - 300 - C25 - H	5.45	15.62	15.87	1/4 - 20	12.70	2.54	4.064	58
MF - 400 - C31 - H	20.45	25.40	19.05	5/16 - 18	15.87	2.54	4.064	58

Gelmecc UK

1-2 Steam Mill Lane, Great Yarmouth, Norfolk, NR31 0HP
Telephone: +44(0) 1493 668622 **Fax:** +44(0) 1493 668623
Email: sales@gelmecc.co.uk **Website:** www.gelmecc.co.uk



ELASTOMER STUD MOUNTS

Male - Blank Parts:

Part Number	Load (kg's)	Dimensions		Metal Insert				
	Maximum Compressive	D Diam.(mm)	L Length (mm)	Type	P Overall Height	G Grip (mm)	TD Depth (mm)	Hardness ASTM D2240 (Shore A Durometer)
MB - 100 - C04 - H	1.81	6.985	8.128	#4 - 40	5.08	1.52	n/a	58
MB - 100 - C04 - SL20100	0.22	7.112	8.128	#4 - 40	5.08	1.52	n/a	21
MB - 100 - C04 - SL25200	0.22	7.112	8.128	#4 - 40	5.08	1.52	n/a	27
MB - 200 - C06 - H	3.63	10.16	12.70	#6 - 32	9.52	1.52	n/a	58
MB - 200 - C06 - SL20100	0.45	10.28	12.70	#6 - 32	9.52	1.52	n/a	21
MB - 200 - C06 - SL25200	0.45	10.28	12.70	#6 - 32	9.52	1.52	n/a	27
MB - 200 - C08 - H	3.63	10.16	12.70	#8 - 32	9.52	1.52	n/a	58
MB - 200 - C08 - SL20100	0.45	10.16	12.70	#8 - 32	9.52	1.52	n/a	21
MB - 200 - C08 - SL25200	0.45	10.16	12.70	#8 - 32	9.52	1.52	n/a	27
MB - 300 - C25 - H	9.09	15.62	15.87	1/4 - 20	12.70	2.54	n/a	58
MB - 400 - C31 - H	22.7	25.40	19.05	5/16 - 18	15.87	2.54	n/a	58

Gelmecc UK

1-2 Steam Mill Lane, Great Yarmouth, Norfolk, NR31 0HP
Telephone: +44(0) 1493 668622 **Fax:** +44(0) 1493 668623
Email: sales@gelmecc.co.uk **Website:** www.gelmecc.co.uk